



BAND HEATERS

Durex provides a complete line of mica and ceramic band heaters used extensively for injection molding and extrusion applications. Operating at temperatures up to 1200°F, these heaters are an economical heat source, providing quick thermal response with maximum flexibility of design



parameters. Mica band heaters are available with strap lock-up, flange lock-up, or wedge lock-up clamping styles. Ceramic band heaters are available with built-in brackets, latch and trunion lock-up, or flange lock-up clamping styles.

SPECIAL OPTIONAL FEATURES:

- Two piece construction
- Holes and cutouts
- Dual voltage
- Partial coverage
- Ground stud

TYPICAL APPLICATIONS:

- Plastic Injection Molding
- Plastic, Food, or Candy Extruders
- Food Service Warming
- Blow Molding Machines
- Holding Tanks
- Drum Heating

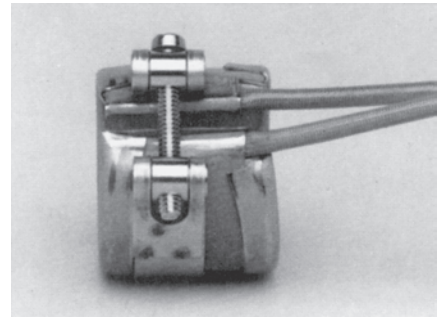


BAND HEATERS

MICA BAND HEATERS

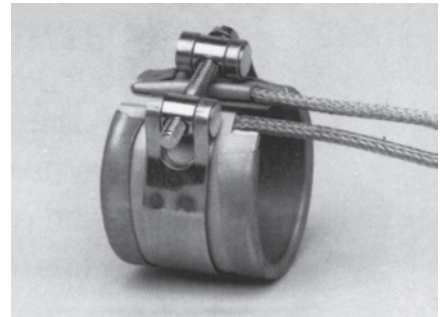
Type A

Lead wires exit the same side of the heater on each side of the gap. This termination is the most common for small diameter heaters.



Type D

Lead wires exit the same side of the heater similar to Type A with the addition of a protective stainless steel overbraid.



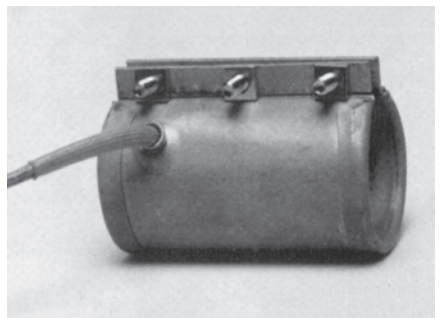
Type G

High temperature European style plug is mounted directly to the outside of the heater body. This design can be constructed with various locations to suit the application.



Type B

Lead wires exit through outside of heater body with protective fiberglass sleeve at lead exit point.



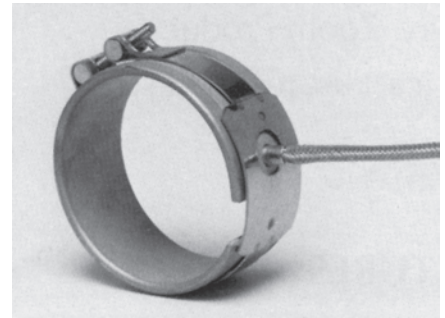


BAND HEATERS

MICA BAND HEATERS

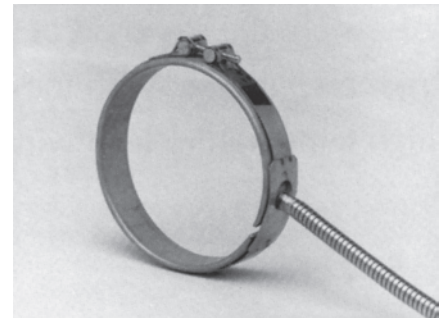
Type E

Lead wires exit through outside of heater body similar to Type B except with addition of a protective stainless steel overbraid.



Type F

Lead wires exit through the outside of the heater body similar to Type B with the addition of a protective stainless steel armor cable.



Type H

Threaded post terminals exit the outside of the heater body at the gap on each side of the heater.



Type J

Threaded post terminals exit the outside of the heater body similar to Type H except both terminals are located on one side of the gap.

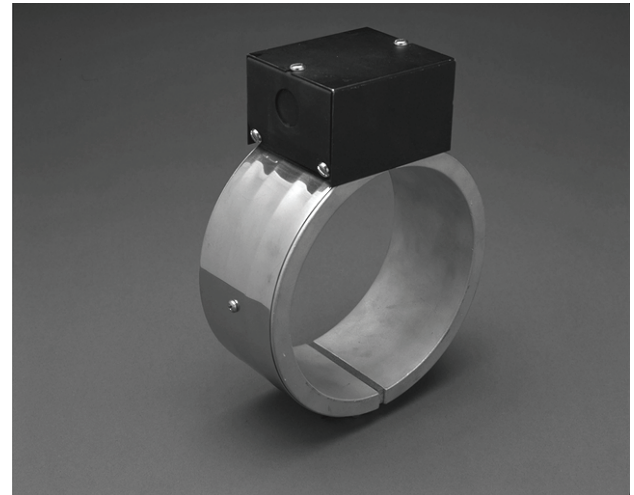




BAND HEATERS

DUROFLEX BAND HEATERS

Duroflex Band Heaters can be custom designed based on the customer's specification. Duroflex heaters feature precision formed aluminum sections for optimum heat transfer, a heavy duty clamping band, and an optional terminal box. Band widths are available in 1 1/2", 3", and 4".



SPECIFICATIONS

Resistance Tolerance: NEMA standard +10%, -5%
Wattage Tolerance: NEMA standard +5%, -10%
Maximum Volts: 277 each half
Maximum Amperage: 30
Maximum Watt Density: 20 watts/sq. inch on sheath
Minimum I.D.: 3 1/2"
Maximum I.D.: Consult Factory
Standard Gap When Tightened: 1/4" up to 12" I.D.
 Gap increases with diameter to compensate for thermal expansion.

TERMINATION OPTIONS

Type T: Threaded Stud Terminals
Type S: Sheet Metal Box (NEMA 1)
Type B: Braided Leads
Type F: Flex Hose Leads
Type X: Special

FEATURES:

- Long, dependable service
- Contamination resistant design
- Uniform surface temperature
- Low expansion clamping mechanism for tight fit
- Excellent heat transfer

TYPICAL APPLICATIONS:

- Plastic Extruder Barrels
- Injection Molding Machines
- Blow Molding Equipment
- Blow Film Dies

BAND HEATERS

DUROFLEX BAND HEATERS

1 1/2" Wide			
Part Number	I.D.	Watts	Volts
DBH-03D01H-6500□S	3¼	650	120/240
DBH-03H01H-7000□S	3½	700	120/240
DBH-04001H-7500□S	4	750	120/240
DBH-04D01H-7750□S	4¼	775	120/240
DBH-04H01H-8000□S	4½	800	120/240
DBH-04M01H-8500□S	4¾	850	120/240
DBH-05001H-9250□S	5	925	120/240
DBH-05D01H-9750□S	5¼	975	120/240
DBH-05H01H-1000□S	5½	1000	120/240
DBH-06001H-1100□S	6	1100	120/240
DBH-06D01H-1150□S	6¼	1150	120/240
DBH-06H01H-1200□S	6½	1200	120/240
DBH-06M01H-1250□S	6¾	1250	120/240
DBH-07001H-1300□S	7	1300	120/240
DBH-07D01H-1350□S	7¼	1350	120/240
DBH-07H01H-1400□S	7½	1400	120/240
DBH-07M01H-1450□S	7¾	1450	120/240
DBH-08001H-1475□S	8	1475	120/240
DBH-08D01H-1525□S	8¼	1525	120/240
DBH-08H01H-1550□S	8½	1550	120/240
DBH-08M01H-1600□S	8¾	1600	120/240
DBH-09001H-1675□S	9	1675	120/240
DBH-09D01H-1725□S	9¼	1725	120/240
DBH-09H01H-1775□S	9½	1775	120/240
DBH-09M01H-1825□S	9¾	1825	120/240
DBH-10001H-1850□S	10	1850	120/240
DBH-10D01H-1900□S	10¼	1900	120/240
DBH-10H01H-1950□S	10½	1950	120/240
DBH-10M01H-2000□S	10¾	2000	120/240
DBH-11001H-2025□S	11	2025	120/240
DBH-11D01H-2075□S	11¼	2075	120/240
DBH-11H01H-2125□S	11½	2125	120/240
DBH-11M01H-2175□S	11¾	2175	120/240
DBH-12001H-2225□S	12	2225	120/240
DBH-12D01H-2275□S	12¼	2275	120/240
DBH-12H01H-2300□S	12½	2300	120/240
DBH-12M01H-2375□S	12¾	2375	120/240
DBH-13001H-2425□S	13	2425	120/240
DBH-13D01H-2475□S	13¼	2475	120/240
DBH-13H01H-2500□S	13½	2500	120/240
DBH-13M01H-2550□S	13¾	2550	120/240
DBH-14001H-2600□S	14	2600	120/240

3" Wide			
Part Number	I.D.	Watts	Volts
DBH-050030-1400□S	5	1400	120/240
DBH-05D030-1475□S	5¼	1475	120/240
DBH-05H030-1550□S	5½	1550	120/240
DBH-05M030-1625□S	5¾	1625	120/240
DBH-060030-1700□S	6	1700	120/240
DBH-06D030-1775□S	6¼	1775	120/240
DBH-06H030-1825□S	6½	1825	120/240
DBH-06M030-1900□S	6¾	1900	120/240
DBH-070030-1975□S	7	1975	120/240
DBH-07D030-2050□S	7¼	2050	240/480
DBH-07H030-2125□S	7½	2125	240/480
DBH-07M030-2200□S	7¾	2200	240/480
DBH-080030-2275□S	8	2275	240/480
DBH-08D030-2350□S	8¼	2350	240/480
DBH-08H030-2400□S	8½	2400	240/480
DBH-08M030-2475□S	8¾	2475	240/480
DBH-090030-2550□S	9	2550	240/480
DBH-09D030-2675□S	9¼	2675	240/480
DBH-09H030-2675□S	9½	2675	240/480
DBH-09M030-2750□S	9¾	2750	240/480
DBH-100030-2825□S	10	2825	240/480
DBH-10D030-2900□S	10¼	2900	240/480
DBH-10H030-2975□S	10½	2975	240/480
DBH-10M030-3025□S	10¾	3025	240/480
DBH-110030-3100□S	11	3100	240/480
DBH-11D030-3175□S	11¼	3175	240/480
DBH-11H030-3250□S	11½	3250	240/480
DBH-11M030-3325□S	11¾	3325	240/480
DBH-120030-3400□S	12	3400	240/480
DBH-12D030-3475□S	12¼	3475	240/480
DBH-12H030-3525□S	12½	3525	240/480
DBH-12M030-3600□S	12¾	3600	240/480
DBH-130030-3675□S	13	3675	240/480
DBH-13D030-3750□S	13¼	3750	240/480
DBH-13H030-3800□S	13½	3800	240/480
DBH-13M030-3875□S	13¾	3875	240/480
DBH-140030-3950□S	14	3950	240/480

NOTE: □ Insert voltage code from table 3 page 120

NOTE: All sizes listed are "Type S" termination

See Chart on Page 119

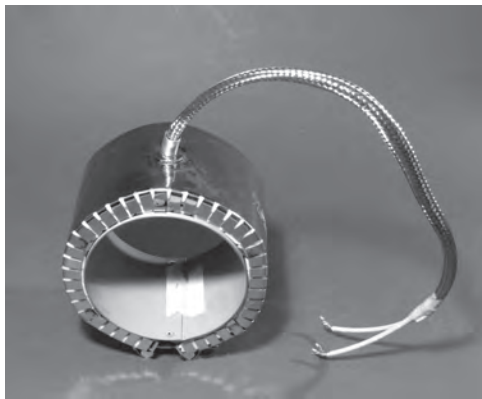


BAND HEATERS

CERAMIC BAND HEATERS

Type Q

Post Terminals are the standard termination on typical ceramic band heater designs. Supplied with high temperature washers and nuts for lead wire attachments.

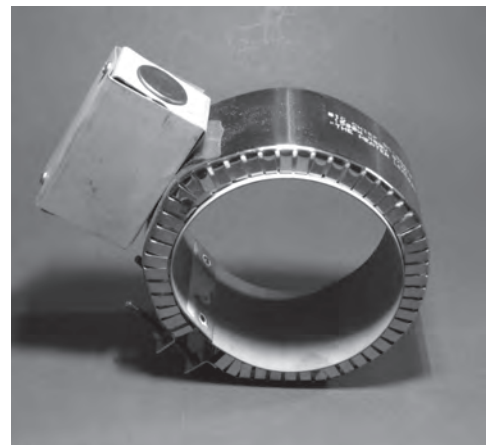


Type S

Leads exit through outside sheath of the heater with strain relief. This termination style is also available with protective stainless steel overbraid or stainless steel armor cable.

Type U

Terminal Box is mounted directly to the outside sheath of the heater. Lead wire extensions with stainless steel braid or armor cable can be an optional attachment.





BAND HEATERS

ORDERING INFORMATION

D	B	H	-	0	8	M	0	4	0	-	1	0	0	0	5	D
---	---	---	---	---	---	---	---	---	---	---	---	---	---	---	---	---

Duroflex Band Heater

Inner Diameter of Heater
(Full Inch) 8.75"
Partial Inch Length
Use Table #1

Width
(Full Inch) 4.0"
Partial Inch Length
Use Table #1

Wattage Per Sheet
Use Table #2
0075 = 75W
0500 = 500W
1250 = 1250W
112L = 11,250W

Voltage Per Half
Use Table #3

Termination
T = Threaded Stud
S = Sheet Metal Box
B = Braided Leads
F = Flex Hose Leads
X = Special

C	B	H	-	0	8	M	0	4	0	-	1	0	0	0	5	D
---	---	---	---	---	---	---	---	---	---	---	---	---	---	---	---	---

Ceramic Band Heater

Inner Diameter of Heater
(Full Inch) 8.75"
Partial Inch Length
Use Table #1

Width
(Full Inch) 4.0"
Partial Inch Length
Use Table #1

Wattage Per Sheet
Use Table #2
0075 = 75W
0500 = 500W
1250 = 1250W
112L = 11,250W

Voltage Per Half
Use Table #3

Termination
S = Post Terminals
L = Outside Sheath with
Strain Relief (Optional
Overbraid or Armor)
B = Terminal Box

M	B	H	-	0	8	M	0	4	0	-	1	0	0	0	5	D
---	---	---	---	---	---	---	---	---	---	---	---	---	---	---	---	---

Mica Band Heater

Inner Diameter of Heater
(Full Inch) 8.75"
Partial Inch Length
Use Table #1

Width
(Full Inch) 4.0"
Partial Inch Length
Use Table #1

Wattage Per Sheet
Use Table #2
0075 = 75W
0500 = 500W
1250 = 1250W
112L = 11,250W

Voltage Per Half
Use Table #3

Termination
A = Leads Exit Side
D = Overbraid Leads Exit Side
G = European Plug
B = Leads Exit Outside Body
E = Overbraid Exit Outside Body
F = Armor Cable Exit Outside Body
H = Post Terminals Opposite Sides
J = Post Terminals Same Side

See Tables on Page 120



BAND HEATERS

ORDERING INFORMATION

Table #1			
Frac.	=	Deci.	= Code
0	=	0	= 0
1/16"	=	.062"	= A
1/8"	=	.125"	= B
3/16"	=	.188"	= C
1/4"	=	.250"	= D
5/16"	=	.312"	= E
3/8"	=	.375"	= F
7/16"	=	.438"	= G
1/2"	=	.500"	= H
9/16"	=	.562"	= J
5/8"	=	.625"	= K
11/16"	=	.688"	= L
3/4"	=	.750"	= M
13/16"	=	.812"	= N
7/8"	=	.875"	= P
15/16"	=	.938"	= R
1"	=	1.000"	= S

Table #2
Wattage Codes
C = 00
A = 25
L = 50
B = 75
K = 000
E = 250
D = 500
F = 750

Table #3
Voltage Codes
< - 100 = 1
101 - 130 = 2
131 - 199 = 3
200-219 = 4
220 - 250 = 5
251 - 300 = 6
301 - 420 = 7
421 - 500 = 8
500 - > = 9

Dual Rating = X