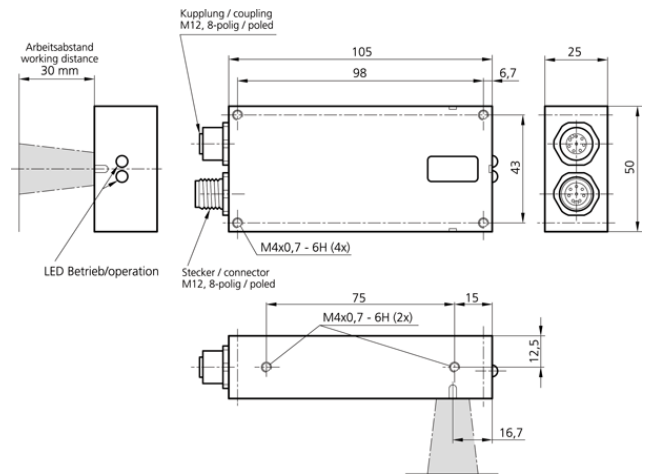
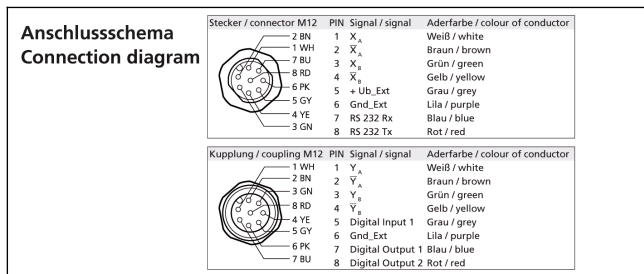


# OBS 105 M 30 INC-1

## Optical movement sensor

- Two incremental outputs for measuring speed, length and rpm
- Non-contact, wear-free
- Independent of surface finish
- Detection of direction on both detection axes (lengthwise & crosswise)
- Option of parameterisation using software RS 232 interface
- Two configurable switching outputs
- Programmable incremental rate



### Safety instructions

Opto-electronic sensor for contactless detection. Improper use may result in hazardous radiation exposure. Pay attention to accident prevention rules and laser class. The instruments are not to be used for safety applications, in particular applications in which safety of persons depends on proper operation of the instruments. These instruments shall exclusively be used by qualified personnel. Repair only by di-soric.

### Technical Details (typ.)

Working distance	30 mm
Service voltage	10 ... 30 V DC
Internal power consumption	< 50 mA
Emitted light	infrared light laser 850 nm
Switching output 1 and 2	push pull, 100 mA, configurable
Serial interface RS 232	115.200 Baud
Resolution	50 µm
Output frequency using biaxial	20.500 Hz (quad edge evaluation)
Output level	Push-Pull: +UB, GND
Output current	< 25 mA
Phaseshift	90° between canal A and B
Short circuit protection	yes
Ambient temperature	+5 ... +45 °C
Protection class	IP 65
Protection degree	III
Casing material	aluminium, black anodized
Window material	polymethyl methacrylate